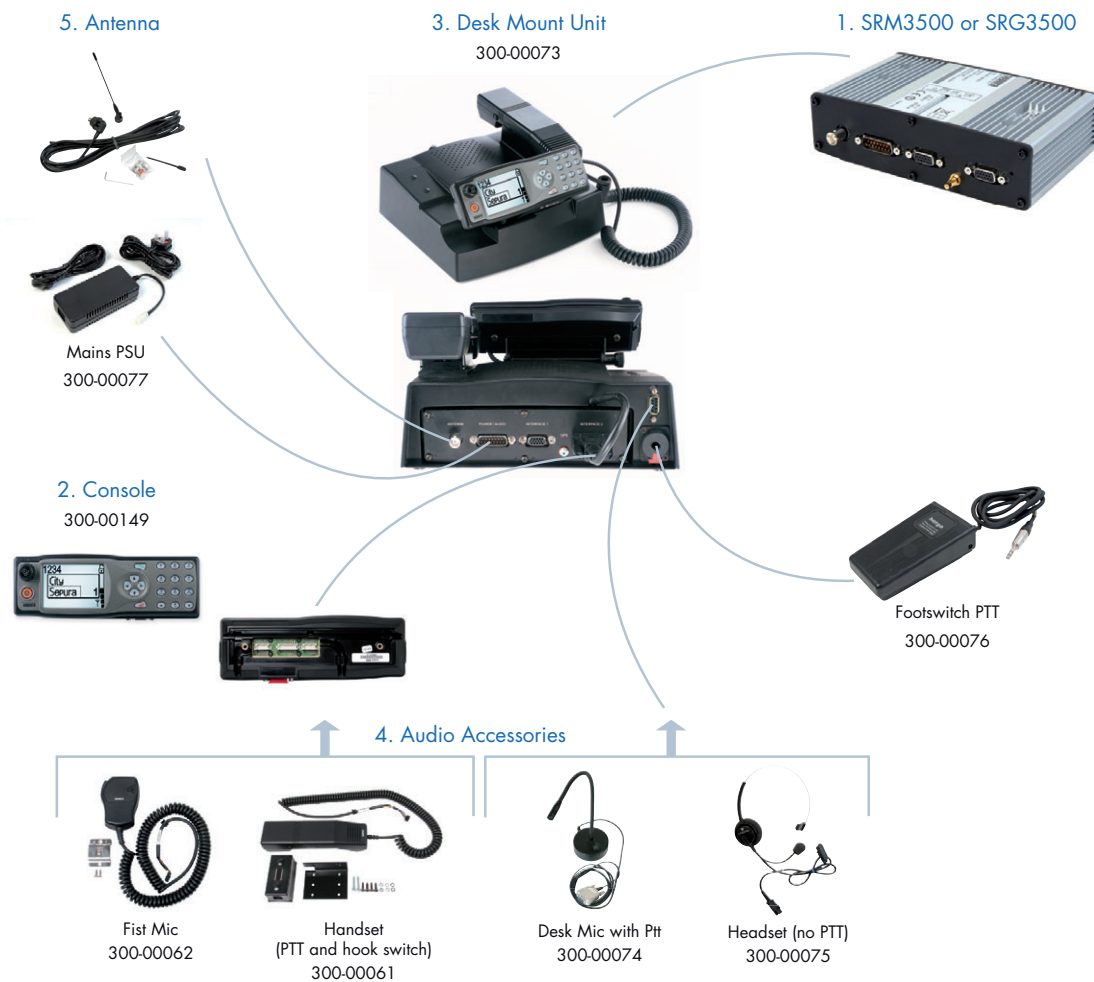


Desk Mount Unit Ordering Guide

The diagram below shows a typical Desk Mount Unit arrangement, for a full list of accessories please refer to your Sepura sales contact



Desk Mount Unit Ordering Guide

Supporting documentation

SB-P-07-4080 Mobile & Gateway Control Room Installations

1. SRM3500 or SRG3500

Please refer to your Sepura sales contact for the SRM/SRG part number

Transceiver includes:

Mounting Plate (300-00086)

Power Cable (300-00066)

Note: can be ordered with a console (300-00149)

2. Console

Note: can be ordered with transceiver

	part number
Standard Console	300-00149
Arabic Console	300-00151
Chinese Console	300-00152
Korean Console	300-00155

3. Desk Mount Unit (DMU)

Desk Mount Unit	300-00073
-----------------	-----------

Includes:

DMU case	
Mains PSU	300-00077
Remote Control Cable 0.5m	300-00067
Console Dash Mount Kit (Pivot)	300-00084
Power Supply to radio adaptor cable	300-00102
Audio Accessory adaptor cable	700-00212

4. Audio Accessory

Desk Mic with PTT	300-00074
Handset (with PTT and hook switch)	300-00061
Fist Mic	300-00062
Headset (no PTT)	300-00075
Footswitch PTT	300-00076

5. Antenna

Antenna Kit 380-400MHz 1/4 Wave	9525 800 41081
Antenna Kit 410-430MHz 1/4 Wave	9525 800 41083
Antenna Kit 450-470MHz 1/4 Wave	9525 800 41079
Antenna Kit 800-870 MHz, 1/4 wave	9525 800 41021
Antenna Kit 380-400MHz 5/8 Wave	9525 800 41082
Antenna Kit 410-430MHz 5/8 Wave	9525 800 41084
Antenna Kit 450-470MHz 5/8 Wave	9525 800 41080
380-430MHz 1/4 wave/GPS Antenna, 5 m lead	360-00001
380-430MHz Fixed building Antenna, 15m RG213 lead, 2dBi gain	390-00004
380-430MHz Flexi whip vehicle Antenna, 5m lead, 2dBi	390-00005
380-430MHz Flexi whip mag-mount vehicle Antenna, 5m lead 2dBi	390-00006